

MAN MACHINE INTERFACE

The MMI is the reliable mechanical fixture system developed by ATX. With our new design, we adapt perfectly to the interaction between man and machine. This property was also the inspiration for the name: Man Machine Interface.

Innovation

As an innovative and leading technological supplier of mechanical test fixtures we can support you with the ideal solutions for your individual requirements. Our experience enables us to offer you significant benefits, including top quality devices which are high-capacity, light and durable. Robust and reliable even under the most demanding and difficult working conditions. Economical and ergonomic, with minimal maintenance requirements. These are all benefits which you acquire with our new MMI. But that's not all:

An overview of our product portfolio

MMI - the mechanical stand-alone fixture for universal application and total reliability

MMIW - the mechanical exchangeable cassette system as a low-cost cassette solution consisting of the MMIWG - basic unit and MMIWK - cassette.

LEVER MECHANISM

A new concept in a nutshell

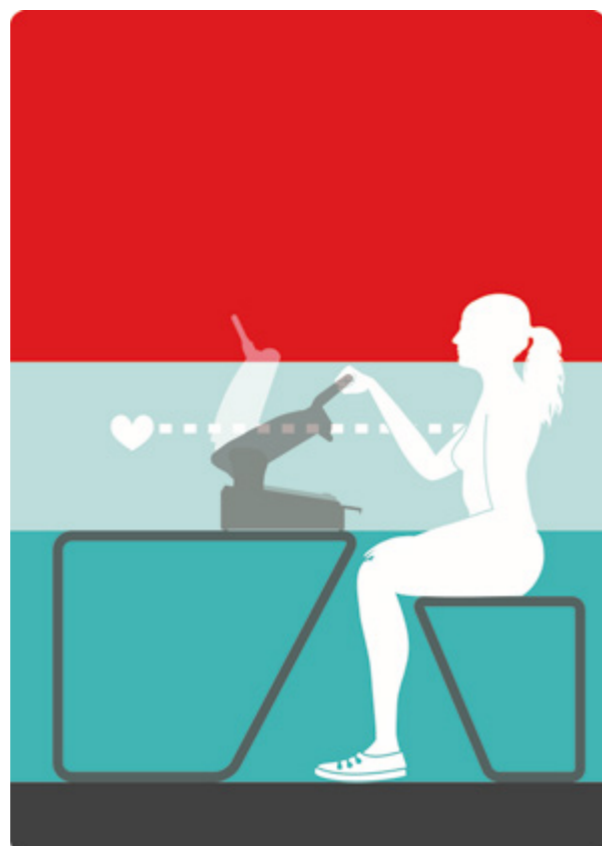


HIGHLIGHTS

- Maximum ease of use
- Ergonomic
- Robust & durable

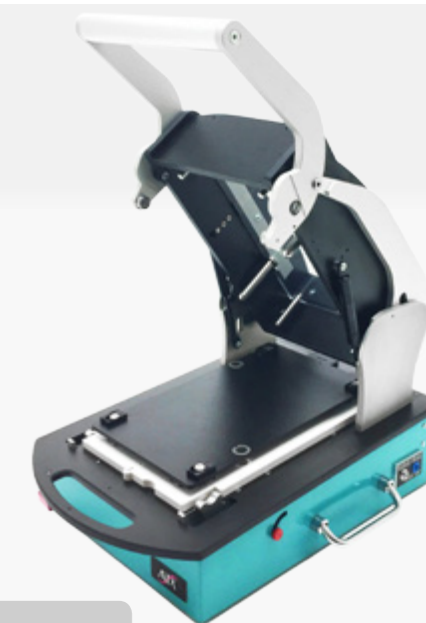
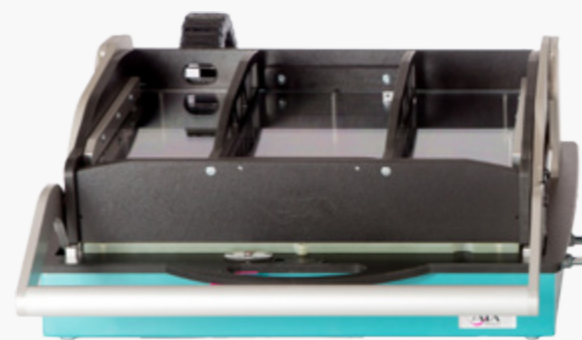
The MMI is optimally adjusted to the operator

Its new lever mechanism, which has been filed as a utility patent, is specially adapted to the movement of the human hand and enables lightweight, ergonomic work for the operator. The all-new lever drive brings the control lever into an easily accessible position as soon as the fixture is fully open. This ensures a natural position while working, both standing and sitting. A sophisticated guide mechanism ensures low operating forces even at high probe forces and allows fatigue-free operation, especially with high volumes of units.



MECHANICAL STANDALONE FIXTURE

MMI - Man Machine Interface



More outstanding features of the MMI

With the MMI from ATX, you have the ideal fixture solution for function test, final test and ICT applications for up to 1600N (approximately 800 needles at 2N). Our new system combines optimal ergonomics with high performance, durability and precision, ensuring your investment over the long term.

The new mechanism allows free access to the moving plate, because on the frame plate there is no front structure. We facilitate the operator in loading the test object.

Through the precentered hold-down plate a more accurate hit pattern of the top-sided removal is generally conveyed. This allows more precise hold-downs in closely mounted assemblies.

Another benefit of the MMI - it is prepared for a safety switch with guard locking, and an electrical interlock.

Standalone unit

Standard - 1200 N (max. 600 probes à 2N)

Order number	Designation	Moving plate	Housing
100683	MMI-A	185 x 310	E01-00145
100639	MMI-B	275 x 310	E01-00115
100640	MMI-C	445 x 310	E01-00127
100668	MMI-D	530 x 330	E01-00125

Amplified - 1600 N (max. 800 probes à 2N)

Order number	Designation	Moving plate	Housing
100642	MMI-BV	275 x 310	E01-00115
100641	MMI-CV	445 x 310	E01-00117
100669	MMI-DV	530 x 330	E01-00125

Tandem fixture with 2 mechanisms in one housing

Order number	Designation	Moving plate	Housing
100659	MMI-A-DO	185 x 310	E01-00117

MECHANICAL STANDALONE FIXTURE

MMI-L - Man Machine Interface Light Version



MMI-L Light Version

The MMI-L is the ATX developed mechanical fixture for smaller PCB's with few probes. The favorable price of the light version gives the possibility to create an ergonomic fixture also for price sensitive small projects. It comes with a compact shape and can be used where work space is limited tightly.

Simple but efficient. Your Benefits:

- Cost effective
- Ergonomic operation
- For max. 200 probes (a 2N total 400N)
- Stroke 23mm
- Moving plate 255 x 255 mm
- Back panel for connector mounting
- 2x ESD Pin
- 1x fixture down
- Housing: E01-00001

Standalone unit			
Order no.	Designation	Moving plate	Housing
100660	MMI-L	255 x 255	E01-00001

The light version does not include the new locking system for the moving plate, the stiffening bars for the push plate and the floating push plate. For double side access we recommend MMI-B.

MECHANICAL EXCHANGEABLE CASSETTE SYSTEM

MMIW - Man Machine Interface exchangeable cassette system



Compact exchangeable cassette system MMIW

The MMIW mechanical exchangeable cassette system consisting of the MMIWG basic unit and the MMIWK cassette provides you with even more convenience and efficiency. In your testing centre the low-cost cassette solution based on the MMI mechanism is ideal for frequently changing products. In switching between products you save time because no tools are required, while also benefiting from minimal maintenance requirements and short retooling times thanks to the additional hard-wearing interface.

For the change system we use a pylon block interface that individually transfers the signals with 170-pin signal blocks, power and coaxial blocks as needed, as well as blocks for fibre optic cables and compressed air.

Basic unit
suitable for MEWK-cassette

Order number	Designation	Moving plate	Housing
100646	MMI-MEWG-A	275 x 240	E01-00115
100647	MMI-MEWG-B	445 x 240	E01-00117

Exchangeable cassette

Order number	Designation	Moving plate
100767	MEWK-A	275 x 240
100768	MEWK-B	445 x 240

Basic unit			
Order no.	Designation	Moving plate	Housing
100637	MMIWG-A	294 x 310	E01-00124
100636	MMIWG-B	424 x 310	E01-00125
100663	MMIWG-C	554 x 310	E01-00132

Exchangeable cassette

Standard - 1200 N (max. 600 probe á 2N)

Order no.	Designation	Moving plate	Interface block
100638	MMIWK-A	294 x 310	6 block
100998	MMIWK-B	424 x 310	10 block
100661	MMIWK-C	554 x 310	12 block

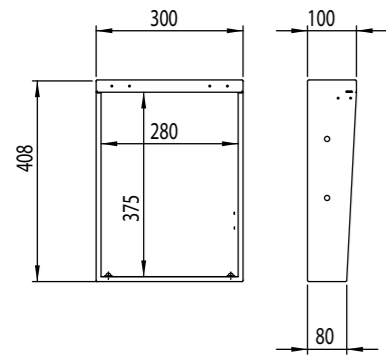
Amplified - 1600 N (max. 800 probe á 2N)

Order no.	Designation	Moving plate	Interface block
100643	MMIWK-AV	294 x 310	6 block
100999	MMIWK-BV	424 x 310	10 block
100662	MMIWK-CV	554 x 310	12 block

AVAILABLE HOUSING TYPES

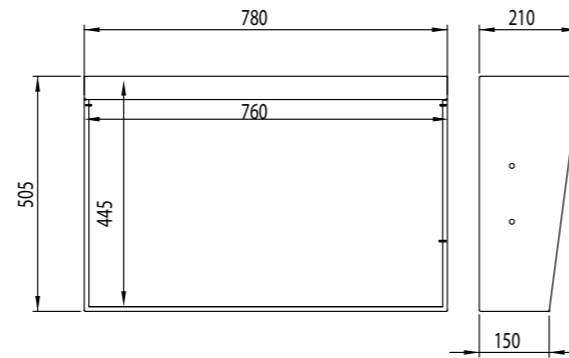
Ensuring that MMI and MMIW adapt flexibly to your test

Housing with back panel (connectors can be mounted as required)



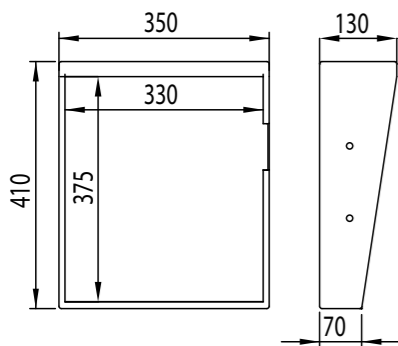
E01-00145

Standard housing for MMI-A



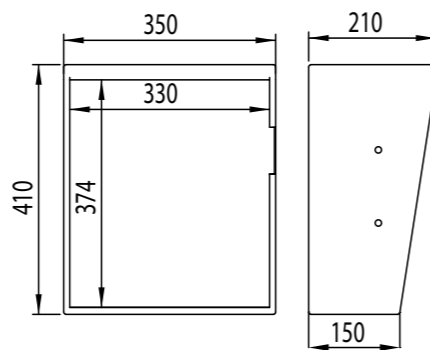
E01-00132

Standard housing for MMIWG-C



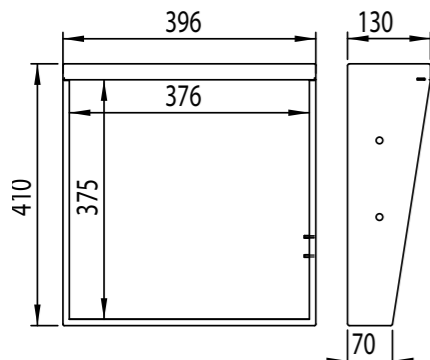
E01-00001

Standard housing for MMI-L light



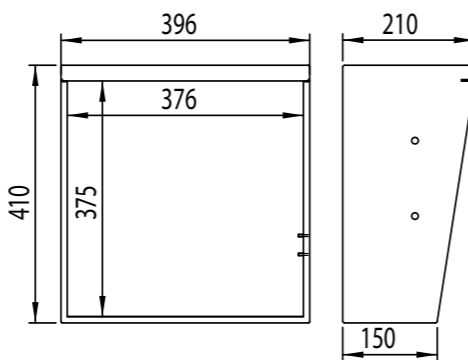
E01-00012

High housing for MMI-L light



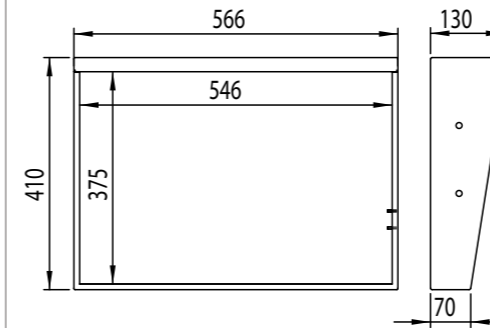
E01-00115

Standard housing for MMI-B und MMIW-MEWG-A



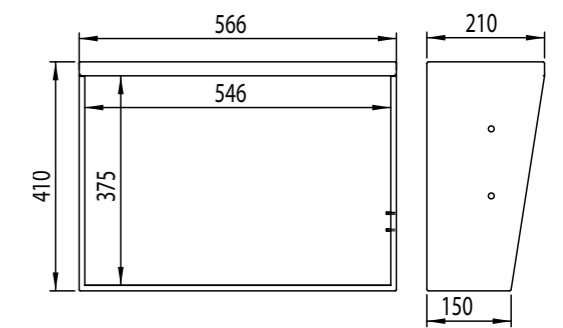
E01-00116

High housing for MMI-B und MMI-MEWG-A



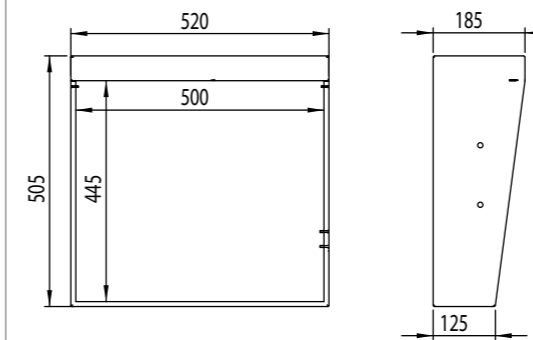
E01-00117

Standard housing for MMI-C, MMI-A DO und MMI-MEWG-B



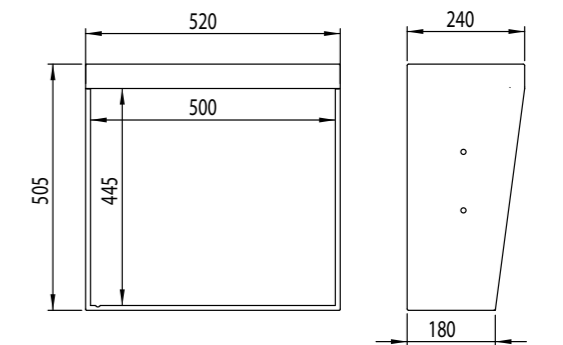
E01-00118

High housing for MMI-C und MMI-MEWG-B



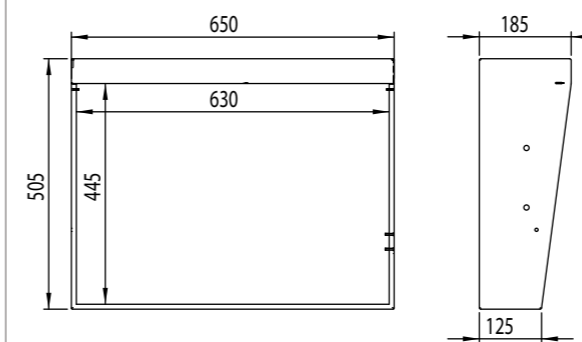
E01-00124

Standard housing for MMIWG-A



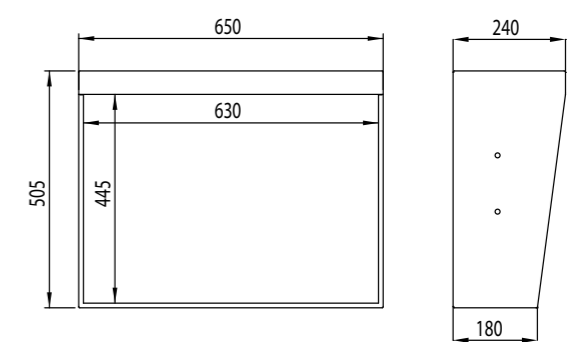
E01-00123

High housing for MMIWG-A



E01-00125

Standard housing for MMI-D and MMIWG-B



E01-00133

High housing for MMI-D and MMIWG-B

Additional forms of housing are available upon request.

Our housings are available in the following colors:

Turquoise RAL5018
Light gray RAL7035

Additional colors upon request.

Contact us



Would you like to find out more about us or get in touch with the appropriate contact person?
You'll find the direct line on our website - together with your personal sales expert:

www.atx-hardware.de ▶ [Contact](#) ▶ [Contact partner](#)

We are committed to finding the optimal technical solution for you. Why not put us to the test!



ATX Hardware GmbH West
Subsidiary of ATX Hardware GmbH

Pürgen branch
Am Kornfeld 8
86932 Pürgen, Deutschland/Germany

Phone: +49 81 96 / 93 04 - 0
Telefax: +49 81 96 / 93 04 - 19

Email: projekte@atx-hardware.de
Web: www.atx-hardware.de

Weil branch
Carl-Zeiss-Straße 5/1
71093 Weil im Schönbuch, Deutschland/Germany

Phone: +49 81 96 / 93 04 - 345 or 349
Telefax: +49 81 96 / 93 04 - 359

Email: projekte@atx-hardware.de
Web: www.atx-hardware.de