

ME2-SERIES | INNOVATION IN PERFECTION

The evolution of our proven ME1-series



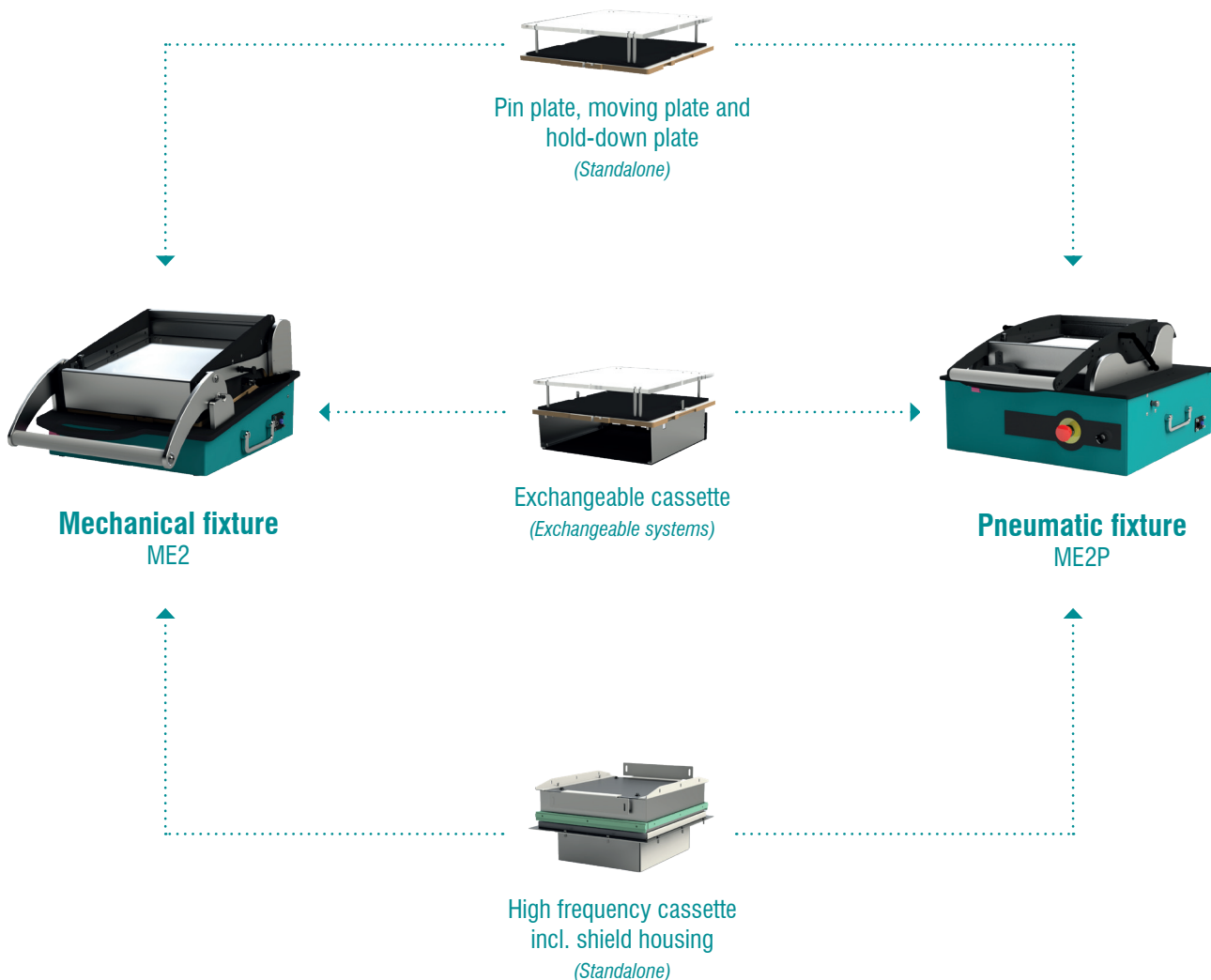
Discover our latest innovative fixture series, which offers you perfect fixture solutions for needle forces up to 600 N (approx. 300 needles á 2 N) with maximum flexibility. The ME2-series includes not only mechanical and pneumatic standalone fixtures, but also the matching exchangeable cassette systems and high frequency variants. What makes this series special? The seamless compatibility of the exchangeable cassettes within the line. This means maximum flexibility and efficiency in your work.

Discover the diverse combination options of our new ME2-series now!

OVERVIEW

ME2-series

Thanks to our innovative technology, the same exchangeable inserts can be used throughout the series, provided the moving plate dimensions are identical. This means that the pin plate, moving plate and hold-down plate of the ME2 and ME2P fixtures are compatible with each other. In addition, it is possible to expand both variants with the ME2HFK high frequency cassette. At the same time, the exchangeable cassettes of the exchangeable systems also offer seamless compatibility.



MECHANICAL FIXTURE - ME2

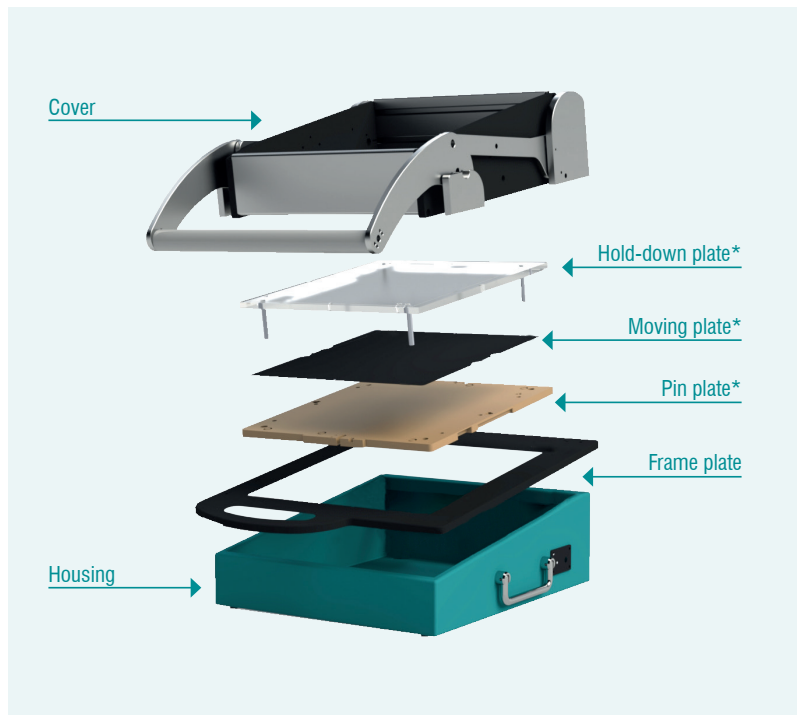
Standalone

In the more than 25-year success story of our company, the ME unit model has always played a special role. It is the proven classic that still represents our best-selling product series.

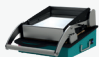
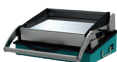
And now we are taking a new approach with this series - even more economical, innovative and universally applicable.

The mechanical ME2-series is designed for high-volume production and has passed impressive tests with well over 1 million cycles. Thanks to the versatile compatibility of our new fixture series, we offer you maximum flexibility with increased cost-effectiveness.

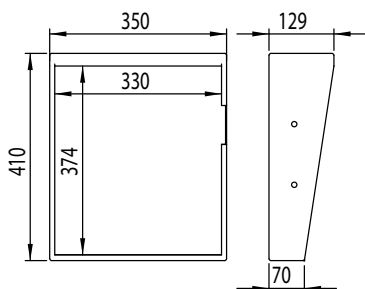
*Universal pin plate, moving plate and hold-down plate. Can be used on both the ME2 and ME2P (with the same moving plate dimensions).



STANDALONE - MECHANICAL

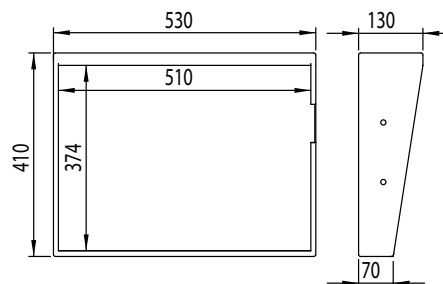
Order Number	Designation	Fixture	Moving plate (X x Y)	Standard housing
101504	ME2P-B		275 x 304	E01-00204
101505	ME2P-C		445 x 304	E01-00207

AVAILABLE HOUSING TYPES



E01-00001

Standard housing for ME2-B



E01-00002

Standard housing for ME2-C

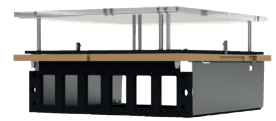
MECHANICAL EXCHANGEABLE CASSETTE SYSTEM - ME2W

Exchangeable cassette system

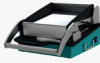
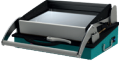
With the ME2W, consisting of the components ME2WG basic unit and ME2WK exchangeable cassette, we can open up even more convenient perspectives for you.

Get the cost-effective cassette solution based on our proven ME mechanics for many changing products in your test center. You save time during product changeover and benefit from minimal maintenance as well as the shortest set-up times. The ME2WK features a 6 or 10 pylon block interface.

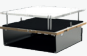

Universal exchangeable cassette. Can be used with both the ME2WG and ME2PWG (with the same moving plate dimensions).



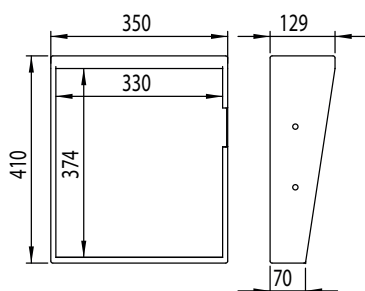
EXCHANGEABLE BASIC UNIT - MECHANICAL

Order Number	Designation	Fixture	Moving plate (X x Y)	Standard housing
101510	ME2WG-B		275 x 304	E01-00001
101500	ME2WG-C		445 x 304	E01-00002

EXCHANGEABLE CASSETTE

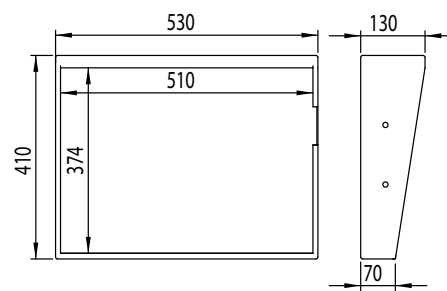
Order number	Designation	Fixture	Moving plate (X x Y)	Pylonblocks	Compatibility
101510	ME2WK-B		275 x 304	6	ME2WG-B & ME2PWG-B
101500	ME2WK-C		445 x 304	10	ME2WG-C & ME2PWG-C

AVAILABLE HOUSING TYPES



E01-00001

Standard housing for ME2-B



E01-00002

Standard housing for ME2-C

PNEUMATIC FIXTURE - ME2P

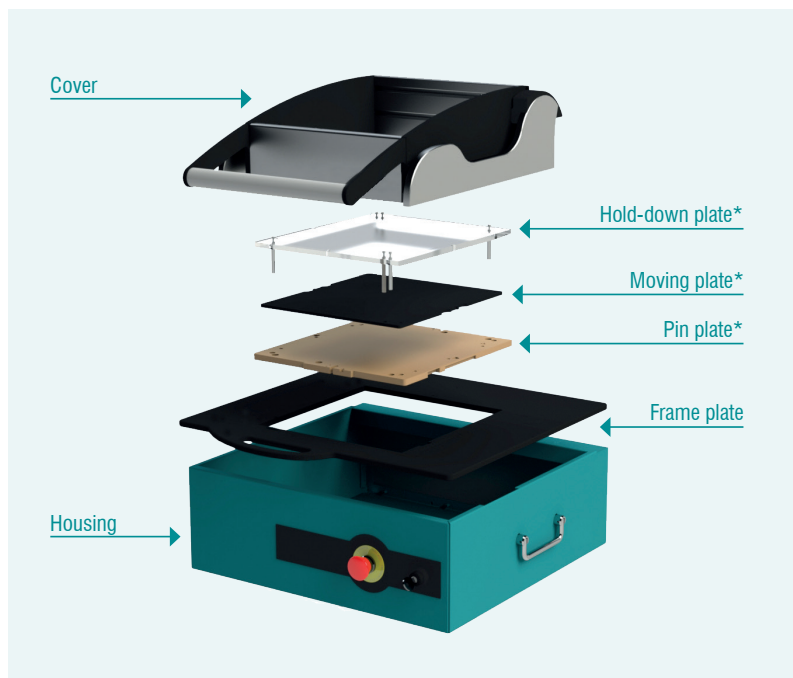
Standalone

The ME2P pneumatic fixture is the perfect solution for high-volume productions where precise and automated handling is required. Thanks to the pneumatic stroke and its optional auto-open function, it allows fatigue-free work with manual operation.



For combination with robots, the ME2P can be fully automated with auto-open-close function in cordoned or secured areas.

The ME2P offers an opening angle of 90° and is therefore optimally designed for robot operation.

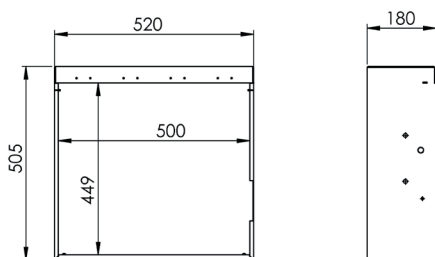
*Universal pin plate, moving plate and hold-down plate. Can be used on both the ME2P and ME2 (with the same moving plate dimensions).



STANDALONE - PNEUMATIC

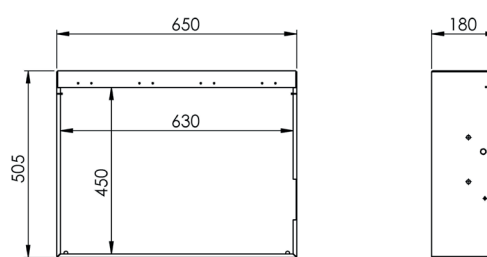
Order Number	Designation	Fixture	Moving plate (X x Y)	Standard housing
101504	ME2P-B		275 x 304	E01-00204
101505	ME2P-C		445 x 304	E01-00207

AVAILABLE HOUSING TYPES



E01-00204

Standard housing for ME2P-B



E01-00207

Standard housing for ME2P-C

PNEUMATIC EXCHANGEABLE CASSETTE SYSTEM - ME2PW

Exchangeable cassette system



The pneumatic version of the ME2-series is also available as an exchangeable system. The ME2PW consists of the two main components ME2PWG basic unit and ME2PWK exchangeable cassette.

Similar to the ME2P, this exchangeable system has an auto-open function for manual operation or optionally a fully automated auto-open-close function for use in cordoned or secured areas. The 90° opening angle allows easy operation both manually (auto-open) and in robot mode (auto-open-close).

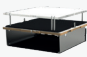

Universal exchangeable cassette. Can be used with both the ME2PWG and ME2WG (with the same moving plate dimensions).



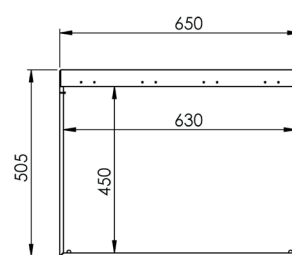
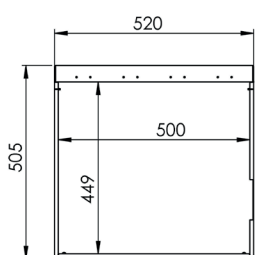
EXCHANGEABLE BASIC UNIT - PNEUMATIC

Order Number	Designation	Fixture	Moving plate (X x Y)	Standard housing
101506	ME2PWG-B		275 x 304	E01-00204
101507	ME2PWG-C		445 x 304	E01-00207

EXCHANGEABLE CASSETTE

Order Number	Designation	Fixture	Moving plate (X x Y)	Pylonblocks	Kompatibilität
101510	ME2WK-B		275 x 304	6	ME2PWG-B & ME2WG-B
101500	ME2WK-C		445 x 304	10	ME2PWG-C & MEPWG-C

AVAILABLE HOUSING TYPES



E01-00204

Standard housing for ME2PWG-B

E01-00207

Standard housing for ME2PWG-C

HIGH FREQUENCY APPLICATION - ME2HFK

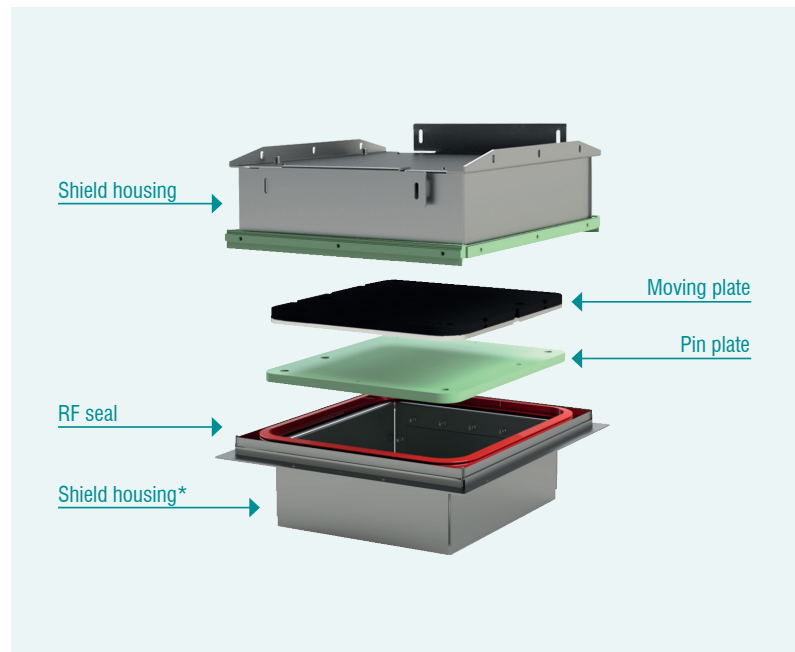
Standalone

The mechanical as well as pneumatic version of the ME2-series can easily be extended by the high frequency insert ME2HFK, which also contains the RF shield housing.

Thus, both the ME2 and the ME2P with ME2HFK use can accurately and reliably test sensitive and transmitting assemblies - even those with a combination of transmitter and receiver - without risking consequences for your production. At the same time, interference on sensitive assemblies can be reliably ruled out. Especially when testing in the high frequency range, it is important to reliably protect your DUTs against interference radiation from the environment.

Universal high frequency cassette. Can be used with both base units ME2 and ME2P.

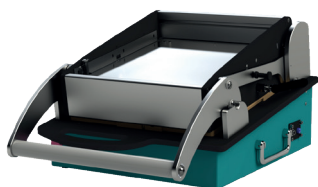
**Dimension bottom shield housing: 212 x 240*



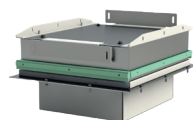
HIGH FREQUENCY CASSETTE

Order Number	Designation	Fixture	Moving plate (X x Y)	Compatibility
101504	ME2HFK-B		235 x 265	ME2-B & ME2P-B

COMPATIBILITY ME2HFK WITH ME2 AND ME2P



Mechanical fixture
ME2



High frequency cassette
incl. shield housing
(Standalone)



Pneumatic fixture
ME2P

UNIQUE SELLING PROPOSITIONS

ME2-series

Economical:

Highest quality and economic efficiency

Lightweight:

The perfect combination of lightness and performance

Versatile compatibility:

Exchangeable cassettes within the product series compatible

Linear stroke:

For double-sided adaptations

Top loader function:

Easily exchangeable cassette

Rear wall:

Variable rear wall removal

Available versions:

- ✓ **Mechanical** (standalone & exchangeable system)
- ✓ **Pneumatic** (standalone & exchangeable system)
- ✓ **High frequency** (standalone)

The evolution of our proven ME1-series

Cassette interface:

Also features an interface for pylon blocks





ATX HARDWARE GMBH WEST

Location Pürgen | Am Kornfeld 8 | 86932 Pürgen

Location Weil im Schönbuch | Carl-Zeiss-Straße 5/1 | 71093 Weil im Schönbuch

P +49 8196 9304-0

F +49 8196 9304-19

projekte@atx-hardware.de

www.atx-hardware.de