

## MORE THAN JUST A RELOCATION

We set new standards for your success!

**Our new company building opens up completely new dimensions for us - and for you.**

Our new premises are far more than just a new building - they are the foundation for an expanded portfolio, optimum flexibility, maximum precision and pioneering innovations. The new location not only offers more storage capacity, but also more space for large-scale customised adaptations with automation and large testing systems. For you, this means more space and capacity for demanding, customised projects - from the initial idea through to implementation.



## STANDARD VERSIONS OF THE ME2-SERIES NOW IN STOCK

The new mechanical, high-frequency, pneumatic fixture for ICT, FKT and EOL applications

We have considerably expanded our storage capacities to ensure standardised stock-keeping of selected product lines. As a result, we can now supply some ME2-series test fixtures in their standard version from stock. This means for you: immediately available test fixture kits without additional options and extensions\*, exactly when you need them.

Thanks to this extended capacity, you benefit from faster availability and can plan your projects precisely without having to worry about delays. Our simple ordering process enables direct and uncomplicated ordering, which increases your flexibility and optimises the processing of your orders.

**Our new storage solutions set standards in terms of delivery speed and offer you the planning security you need for the success of your projects.**

### ORDER NOW!

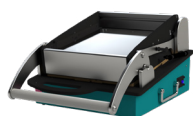
And secure exclusive benefits

- ✓ Fast delivery from stock
- ✓ Immediate availability
- ✓ Simple and fast process for both ordering and delivery
- ✓ Increased planning reliability

**ONLINE SHOP**

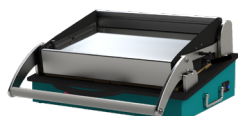
## OUR STANDARD ME2-SERIES FIXTURES IN STOCK AT A GLANCE

Now available from stock



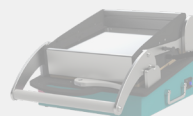
### ME2-B | Art. 101501

Moving plate: 275 x 304 mm  
Usable area: 230 x 270 mm  
Force: 600 N (300 needles á 2N)  
**Unit price: €1,563.54**



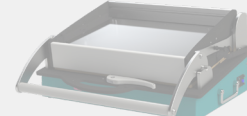
### ME2-C | Art. 101530

Moving plate: 445 x 304 mm  
Usable area: 400 x 270 mm  
Force: 600 N (300 needles á 2N)  
**Unit price: €1,740.00**



### ME2WG-B | Art. 101510

Moving plate: 275 x 304 mm  
Usable area: 230 x 270 mm  
Force: 600 N (300 needles á 2N)  
**Unit price: €1,452.30**



### ME2WG-C | Art. 101500

Moving plate: 445 x 304 mm  
Usable area: 400 x 270 mm  
Force: 600 N (300 needles á 2N)  
**Unit price: €1,664.48**

### ME2WK-B | Art. 101503

**Unit price: €519.12**

### ME2WK-C | Art. 101502

**Unit price: €638.60**

**COMING IN THE FUTURE**

\*Note: Our standard versions offer the basic equipment, which includes all the essentials. This includes the standard housing and a plate set consisting of a hold-down plate, moving plate and pin plate. The starter set with LP supports and hold-down plates is also available for an additional charge (please specify when ordering).

### Order options

Give us a call, send us an e-mail or simply enquire via our online shop!

- +49 8196 9304-0
- projekte@atx-hardware.de
- www.atx-hardware.de

