

MMI-MEW | RETHINKING THE CHANGE SYSTEM

A mechanical combination of MMI and ME



Our fixtures are always at the cutting edge of technology, as we are constantly working on their further development. But what makes ATX special is our outstanding service: even if a series is discontinued due to modernization, we are there to support our customers. We offer comprehensive support for older series so that existing systems can continue to be used without costly new purchases. With us, the customer is not faced with the decision to buy a new system, but can rely on proven technology.

OVERVIEW OF MMI-MEW-Series

Our MMI-MEWG combines the advantages of the MMI and MEW series so that existing MEW exchangeable cassettes can be easily adopted regardless of the version. In addition, the MMI-MEWG is a future-proof solution that keeps pace with the ever-changing requirements of the industry. Our customers can be confident that with the MMI-MEWG they are choosing a powerful and long-lasting investment that optimally supports their operational processes and will last in the long term.

MMI pressure mechanics

With an adapted hood design and the integrated mechanics of the proven MMI series, which represents a clear improvement on the ME series, we guarantee ergonomic handling during the testing process.

MEWK exchangeable cassette

The existing MEW cassettes can easily be used in the MMI-MEW system without any changes, modifications or additional investment in the test cassette.

MEWG kit

A slightly modified MEWG kit to accommodate an MMI pressure hood, which also ensures the operation of old MWWKs for repairs, small series production and service operations.



MECHANICAL CHANGE SYSTEM | MMI-MEW

Basic unit and exchangeable cassette

With the mechanics of the MMI series, you can seamlessly continue your tried-and-tested testing processes while switching to a more modern, ergonomic and robust solution. The main advantage for you as a customer is the noticeably easier handling: the optimized, ergonomic design not only ensures more convenient and efficient operation, but also a higher load capacity of the system. This reduces the workload of your employees, shortens set-up times and increases productivity, which ensures a smoother process overall.

In addition, the MMI system enables higher needle forces to be applied, which extends the range of applications and is designed for more demanding test procedures. This gives you a solution that is both ergonomic and powerful and improves your processes in the long term.

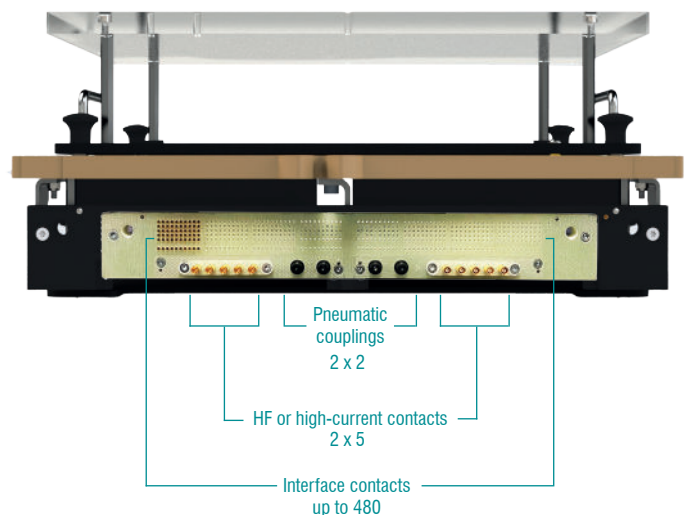
Benefit from a future-proof solution that integrates your existing cassettes and makes your day-to-day work easier thanks to improved handling and ergonomic design.



INDIVIDUAL INTERFACE ASSIGNMENT INTERCHANGEABLE CASSETTE

You can also customize the interface of the MEWK exchangeable cassette according to your requirements.

Here you have a selection of different pneumatic clutches, high-frequency and high-current contacts.



ORDER OPTIONS

Feel free to give us a call, send us an e-mail or simply make an enquiry via our onlineshop!



- +49 (8196) 9304-0
- projekte@atx-hardware.de
- www.atx-hardware.de





MECHANICAL CHANGE SYSTEM | MMI-MEW

Basic unit and exchangeable cassette

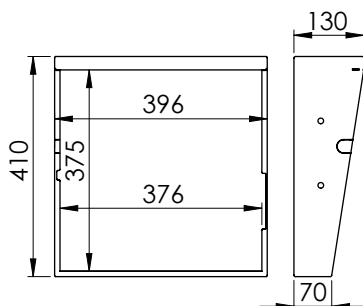
EXCHANGEABLE BASE UNIT - MECHANICAL

Order Number	Designation	Fixture	Board support plate (X x Y)	Standard housing
100646	MMI-MEWG-A		275 x 240	E01-00115
100647	MMI-MEWG-B		445 x 240	E01-00117

EXCHANGEABLE CASSETTE

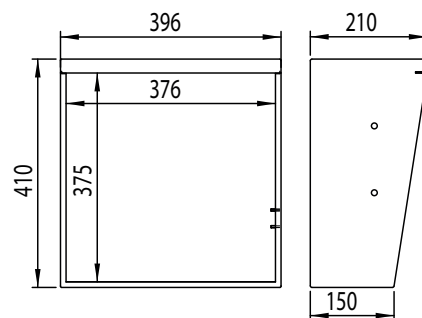
Order Number	Designation	Fixture	Board support plate (X x Y)	Compatibility
100767	MEWK-A		275 x 240	MMI-MEWG-A
100768	MEWK-B		445 x 240	MMI-MEWG-B

AVAILABLE HOUSING VARIANTS



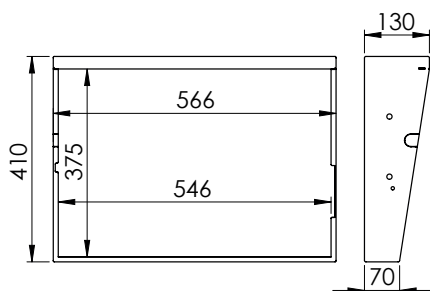
E01-00115

Standard housing for MMI-MEWG-A



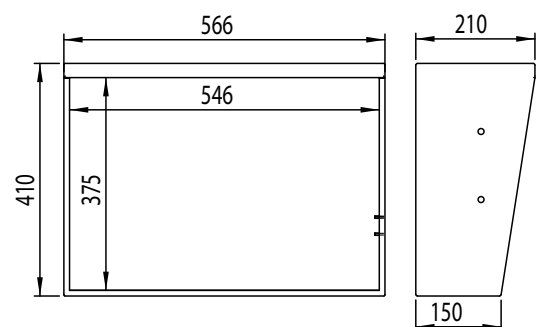
E01-00116

High housing for MMI-MEWG-B



E01-00117

Standard housing for MMI-MEWG-B



E01-00118

High housing for MMI-MEWG-B



ATX HARDWARE GMBH WEST

Location Pürgen | Am Wiesengrund 12 | 86932 Pürgen

Location Ehningen | Waldstraße 15 | 71139 Ehningen

P +49 8196 9304-0

F +49 8196 9304-19

projekte@atx-hardware.de