

# ME2-SERIES

## Product features

Our latest innovative fixture series offers you perfect fixture solutions for needle forces up to 600 N\* (approx. 300 needles at 2 N each) with maximum flexibility. The ME2-series is the ideal solution for the medium force range and is perfectly positioned between our LHS2- and MMI-series. It includes not only mechanical and pneumatic standalone fixtures, but also the matching exchange systems and high-frequency variants. All exchange cassettes are fully compatible with each other – for maximum flexibility and efficiency in your work.

### The cost-effective seamless fixture series with a wide range of combination options, as a standalone or exchangeable system

*\*The needle force we specify is not based on theoretical maximum values, but on real long-term tests with over a million strokes under practical conditions. In contrast to purely mathematical specifications, our force specifications stand for permanently tested reliability and quality that delivers what it promises.*

#### Economical:

Highest quality and cost-effectiveness

#### Hold-down plate:

Tool-free & quick replacement for easy servicing and product changes

#### Linear stroke:

Standard linear stroke (20 mm)

#### Lightweight:

The perfect combination of lightness and performance

#### Moving plate:

The easy-to-release lock allows for effortless removal without any tools

#### Fixture variants:

The ME2-series includes mechanical and pneumatic standalone fixtures, exchangeable systems and high-frequency variants – with 10 variants, it is our second largest product series

#### Opening angle:

Opening angle of up to 90° – for more space when loading and unloading, especially in automated/robot-based processes

#### Automation:

Factory-integrated or retrofittable AOC-E/P module for full automation

#### Cassette removal:

Quick/easy removal thanks to lever with top loader function; forced-centred interfaces with two pressure points ensure consistent contact

#### Rear panel:

Individual adjustments to the test system

#### ESD safety:

Standard ESD dissipating materials and protective measures

#### 3-pin connector & ESD pins:

Signal query and ESD dissipating connection

#### Versatile compatibility:

All exchangeable cassettes within the product series are compatible, simple and uncomplicated expansion through high-frequency use

#### Exchangeable cassette:

Robust, enclosed exchangeable cassette protects contact sleeves and enables easy, secure storage



# ME2-SERIES

## Product features



## SPECIAL FEATURES

### Details

#### • ECONOMICAL:



The well-designed, consistent compatibility of the exchangeable sets within the series not only ensures excellent **value for money**, but also **consistently precise and reliable results** in a wide range of simple mechanical function tests – **one system, countless possibilities**.

#### • OPENING ANGLE:

Coming soon



The **extended opening angle of up to 90°**, which **will be available soon**, makes it easy for both employees and robots to get in – **perfect for loading and unloading the assembly**. This ensures seamless integration into automated workflows and **provides optimal support for use in automated/robot-based processes**.

#### • AUTOMATION:



The Auto-Open-Close module is available in both an electric (AOC-E) and a pneumatic (AOC-P) version and enables the **automated opening, closing and contacting** of test objects from the ME2-series. This compact solution is ideal as an **addition to new test equipment or as a flexible retrofit option** for increasing quantities and changing requirements. **Because only one thing matters to us: finding the best solution for our customers in every situation!**

#### • CASSETTE REMOVAL:

Exchangeable system



**Easily replaceable cassette thanks to top loader function.** After unlocking the cassette, it can be easily removed from the top, eliminating the need to open the housing to replace the cassette. The interfaces of the exchange system are **forcibly centred by bolts**, so that the interface pins cannot be damaged when inserting the exchange cassette. The simple and time-saving cassette exchange, combined with the tool-free and quickly exchangeable hold-down plate, significantly reduces set-up times and guarantees even faster continuation of work on the test specimen, for maximum efficiency throughout the entire test process. The interface, which can be optionally equipped with pylon blocks, is characterised by its durability and maintenance-free design. In addition, the uniform dimensions of the flexibly configurable interface blocks contribute to a tailor-made application solution.

# ME2-SERIES

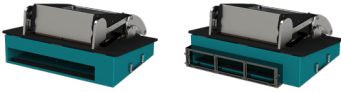
## Product features



### SPECIAL FEATURES

#### Details

#### • REAR PANEL:



The rear panel can be replaced with interfaces of all common types, **allowing individual adaptation to the test system**. Both the prepared cut-out and the housing with included interface frame can be ordered.

#### • ESD SAFETY:



ATX fixtures are able to **dissipate ESD as standard**, unlike some other manufacturers. Except for the pin plate, all fixture components are made of **ESD dissipative material**. Even the metal housing is equipped with an ESD-compatible powder coating. An ESD shield including a connection for ESD dissipation, an ESD wrist strap and a mounted dissipation resistor is pre-installed on each fixture.

#### • 3-PIN CONNECTOR & ESD PINS:



A 'start switch' (internal: 3-pin connector) is installed in the ME2 as standard. This contacts a brass plate on the moving plate. This allows the 'fixture down' signal to be queried during ICT. Also possible with bi-level: In addition to ICT, there is also the FKT query. The **ESD needles (long stroke!)** contact the **moving plate on the underside of the plate in each fixture**. The underside is connected to the top side in an **ESD dissipative** manner by means of a so-called Tapex socket and a screw.

#### • EXCHANGEABLE CASSETTE:

##### Exchangeable system



The exchangeable cassette is **completely enclosed in a robust housing** beneath the pin plate to **protect the contact sleeve and wiring from damage** even during frequent exchanges and to ensure easy and safe storage.

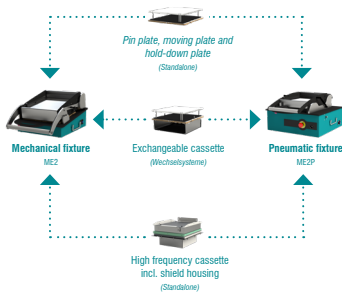
# ME2-SERIES

## Product features

### SPECIAL FEATURES

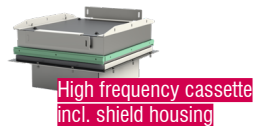
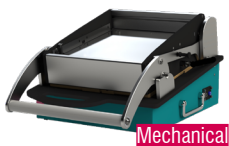
#### Details

#### • VERSATILE COMPATIBILITY:



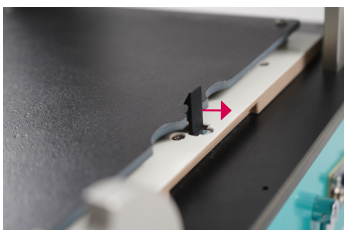
Thanks to our innovative technology, the **same exchangeable inserts can be used throughout the entire series**, provided that the moving plate dimensions are identical. This means that the pin plate, moving plate and hold-down plate of the ME2 and ME2P fixtures are compatible with each other. In addition, it is possible to expand **both variants with the ME2HFK high-frequency insert**, which also includes the shield housing (dimensions of lower shield housing: 212 x 240 mm). At the same time, the exchangeable cassettes of the exchangeable systems also offer seamless compatibility.

#### • FIXTURE VARIANTS:



The ME2-series includes not only **mechanical and pneumatic standalone fixtures**, but also **matching changeover systems and high-frequency variants**. With a total of 10 fixture variants in different sizes and designs, the ME2-series is our second largest product series.

#### • MOVING PLATE:



The moving plate can be easily removed **without tools using two easy-to-release locks**. This provides easy access to the spring-loaded contact pins and contact sockets – ideal for maintenance work, inspections or quick replacement of individual components.

#### • LIGHTWEIGHT:



The ME2-series **combines lightness with performance**: with a weight advantage of around 15 to 20% over common competitor models, it enables optimised handling. At the same time, the ME2-series impresses with its durability – endurance tests with over 1 million strokes under full load prove its robust design and long-term reliability.

# ME2-SERIES

## Product features



## SPECIAL FEATURES

### Details

#### • LINEAR STROKE:



Our fixtures (regardless of the series) are equipped with a linear stroke as standard. For the ME2, this is 20 mm.

#### • HOLD-DOWN PLATE:



The hold-down plate can be **quickly changed without tools** for simple servicing and product changes. Unlike other products, the hold-down plate does not fall down uncontrollably, even after accidental unlocking. It is held at an oblique angle in the hood and can be easily removed from the hood with a controlled forward movement.

## FURTHER SPECIAL FEATURES

### Key points

- ✓ Available as both ME2 (standalone) and ME2W (exchangeable system)
- ✓ The evolution of our proven ME1-series
- ✓ Exchangeable cassette compatible within the series
- ✓ Lockable housing lock, finger pinch protection
- ✓ Quick-release fasteners on the test specimen carrier plate for tool-free needle service
- ✓ An integrated transport lock prevents the hood from being opened accidentally
- ✓ Spring-assisted stand → easy opening/closing of the fixture base housing
- ✓ Cassette interface with up to 10 pylon blocks
- ✓ Various options for connecting an interface to the rear panel, e.g. VPC G12, VPC G25 available
- ✓ Expandable with a wide range of additional options and safety modules, e.g. starter package, electrical/pneumatic locking, hood switch (reed switch), transfer options (drag chain, armoured conduit), auto open/close function, top interface, plug connection, manual button actuation, circuit board locking, Schmersal (hood/support plate and support plate/housing), control, safety switch

## MAINTENANCE RECOMMENDATION

To ensure consistent functionality, we recommend performing maintenance measures at regular intervals. Further information can be found on our homepage in the download area or here: [Maintenance recommendation](#) ✨