



---

FIXTURE ACCESSORIES

# SPECIALIST FIXTURE SOLUTIONS

ATX is Europe's market leader in the manufacture of test fixtures for electronic test procedures.

Why you too should choose an ATX fixture - it's simple:

## TECHNICAL KNOW-HOW

Our sales team is technically well versed - our consultants are selected from the design team or other technical departments.

## PROJECT KNOW-HOW

We work together with you towards a common goal: to find and implement the optimal solution for your individual testing requirements.

## KNOWLEDGE BASE

Our employees bring well over 1,000 man-years of fixture building experience to the team.

# SINCE 1997

# FIXTURE ACCESSORIES

## PUSH FINGER / ALUMINIUM



Order number	Designation
433101	NH - 12 mm
433102	NH - 20 mm
433103	NH - 25 mm
433104	NH - 30 mm
433105	NH - 35 mm
433106	NH - 40 mm
433107	NH - 45 mm
433108	NH - 50 mm

## PUSH FINGER / STAINLESS STEEL



Order number	Designation
433214	NH - S3 - 20 mm
433215	NH - S3 - 25 mm
433216	NH - S3 - 30 mm
433217	NH - S3 - 35 mm
433218	NH - S3 - 40 mm
433219	NH - S3 - 45 mm
433220	NH - S3 - 50 mm
433221	NH - S3 - 55 mm
433231	NH - S3 - 60 mm

# FIXTURE ACCESSORIES

## SPACER

(Spacer and Tip for NH-Aluminium)



Order number	Designation
439003	Spacer 3 x 2,5 mm

## PUSH FINGER / GFK-TIP

(Tip for NH-stainless steel)



Order number	Designation
433200	NH - S3 - Tip - 10 mm (GFK) D=1,5 mm

## PUSH FINGER / GFK



Order number	Designation
433113	NH - S4 - R Rectangular Push Finger for NH 12

## PUSH FINGER / PLASTIC



Order number	Designation
433081	NH - S6 - K45 - 45 mm
433090	NH - S6 - K50 - 50 mm

## SPECIAL PUSH FINGER



Order number	Designation
433111	NH - S5 - 12 Special Push Finger 12 mm

## PUSH FINGER EGS619 / GFK



Order number	Designation
433096	NH E90-50776 - 1,5 mm

## PILOT BOLT



Order number	Designation
335012	d=11,9 l=15 mm, cone shape 1.4301 stainless steel (E90-03008)
335014	d=11,9 l=35 mm 1.4305 steel (E90-03245)

## PILOT BOLT POM



Order number	Designation
335016	d=12 l=15 mm SW10 POM (E90-04074)

# FIXTURE ACCESSORIES

## ROUND CORD



Order number	Designation
455022	Foam rubber round cord 3 mm black

## VACUUM HOSE



Order number	Designation
498012	Vacuum hose
498010	Connecting part (Y-piece)

## PNEUMATIC COUPLING (basic unit)



Order number	Designation
278256	Pneumatic interface HAN module female 3 mm

## VACUUM PORT (vacumm fixture)



Order number	Designation
109649	Vacuum port for ATX Pylon fixture

## MUSHROOM GRIP (with threaded sleeve)



Order number	Designation
494001	Mushroom grip

## BOARD MARKER PROBE



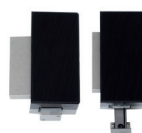
Order number	Designation
549001	BMP1 Board marker probe

## PNEUMATIC COUPLING (cassette)



Order number	Designation
278255	Pneumatic interface HAN module male 3 mm

## SIDE ACCESS MECHANIC



Order number	Designation
109731	Side access mechanic for simultaneous contacting of the side plugs with the hub of the moving plate. hub=8 mm

# FIXTURE ACCESSORIES

## PRESSURE SPRING VACUUM



Order number	Designation
440045	Standard pressure spring $D_e=13,0$ $LO=15,0$ $nt=5,0$ $d=1,4$
440002	Pressure spring Bi-Level $D_e=13,0$ $LO=19,0$ $nt=5,0$ $d=1,4$

## CONE PRESSURE SPRING



Order number	Designation
440027	Cone pressure spring 1,5 - 9,7 bis 18 - 14
440035	Cone pressure spring 1 - 6,2 bis 19,5 - 18

## LOXX-TOP



Order number	Designation
283189	Loxx upper part without bracket, without disc, LO-02N

## DU-BUSHING

(Guide for pin plate)



Order number	Designation
445012	DU-Bushing

## PRESSURE SPRING HPP



Order number	Designation
440031	Pressure spring 0,9 - 9,9 - 16,5
440032	Pressure spring 0,9 - 9,9 - 19,5
270746	Pressure spring 0,9 - 0,9 - 14,8

## REED SWITCH



Order number	Designation
496003	Reed switch NO (two connections)
496004	Reed switch UM (three connections)

## LOXX-SPACER WASHER



Order number	Designation
480467	Spacer washer for LOXX E90-50748

## SET DU-BUSHING & O-RING

(Guide for pin plate)



Order number	Designation
445015	DU-Bushing for Bi-Level
453001	O-Ring 7,8x1,25

# FIXTURE ACCESSORIES

## MAGNET



Order number	Designation
499013	Magnet without clamp d=7,6 h=2,7

## U-SHAPE HOLD



Order number	Designation
330075	U-shape hold d=5 l=88

## STROKE COUNTER



Order number	Designation
263282	Stroke counter

## PUT UP HINGE / COVER OPEN LIMITER



Cover open limiting

Order number	Designation
334002	Put up hinge, long (10-fold)
334001	Put up hinge, short (5-fold)
480956	Cover open limiting parts, E90-03285

## GUIDING BOLT



Order number	Designation
426003	Standard l=38 mm
426001	Bi-Level l=43mm

## GUIDING BOLT



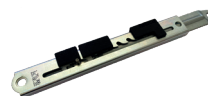
Order number	Designation
426011	Standard with ball head l=28,5 mm
426012	Standard with ball head l=38,5 mm
426010	Bi-Level with ball head l=32,7 mm
426013	Bi-Level with ball head l=42,7 mm

## BI-LEVEL MOTOR



Order number	Designation
109604	Bi-level motor 6 V
109613	Bi-level motor 12 V
109674	Bi-level motor 24 V

## LOCK FOR PUT UP HINGE

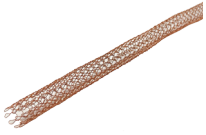


E90-03283 E90-03284

Bestellnummer	Bezeichnung
480954	Put up Hinge Lock 2-Phase, E90-03283
480955	Put up Hinge Lock 3-Phase, E90-03284

# FIXTURE ACCESSORIES

## RF KNIT-SHIELD SEALING



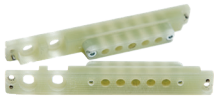
Order number	Designation
454033	Knit-Shield, Ø ca. 6 mm RF knit-shield sealing 2006

## CONTACT SPRING STRIP



Order number	Designation
454032	Contact spring strip Form S, Strength: 0,10 mm

## COMBI INTERFACE MODULE (basic unit)



Order number	Designation
100837	MEWG - IF - combi interface module Pneu-HF-HS

## COMBI INTERFACE MODULE (cassette)



Order number	Designation
100838	MEWK - IF - combi interface module Pneu-HF-HS

## INTERFACE CONTACT (basic unit)



Order number	Designation
101418	Interface contact (Pin & Receptacle)

## INTERFACE CONTACT (cassette)



Order number	Designation
670054	Interfacepin KT-158

## HIGH-CURRENT CONTACT (basic unit)



Order number	Designation
629001	High-current pyramide HSS-150 317 300 A 3002
689037	High-current receptacle 50 A KS-150 30

## HIGH-CURRENT CONTACT (cassette)



Order number	Designation
670034	Interfacepin IK Löt 50 A KT-150 L3 E03-M3

# FIXTURE ACCESSORIES

## HOUSING HINGE



Order number	Designation
331001	Hing 50 x 31 x 1,2 black

## ESD-TRANSFER MMIWG



Order number	Designation
639022	High-current pyramide 160mil HSS-120317 300 A 1510
689064	High-current receptacle KS-113 30

## GAS SPRING



Order number	Designation
443001	20 mm Hub 50 N 4829DF
443002	40 mm Hub 50 N 4846DI
443003	40 mm Hub 100 N 4848DZ
443004	40 mm Hub 150 N 4851DA
443005	60 mm Hub 50 N 4862DQ
443024	60 mm Hub 50 N 192848 L=185,5 mm
443006	60 mm Hub 100 N 4534DS
303015	60 mm Hub 100 N 192856 L=185 mm
443007	60 mm Hub 150 N 4904DI
443008	80 mm Hub 50 N 4915DY

Order number	Designation
443009	80 mm Hub 100 N 4917DO
443010	120 mm Hub 50 N 5025DT
443011	120 mm Hub 100 N 5027DJ
443012	120 mm Hub 150 N 5031DG
443013	150 mm Hub 100 N 5075DQ
443014	150 mm Hub 150 N 5077DG
443015	150 mm Hub 200 N 1562DH
443016	40 mm Hub 200 N 1338DJ
443018	150 mm Hub 50 N 5072DE

# FIXTURE ACCESSORIES

## TOOLING PIN HARDENED (with thread)



Order number	Designation
425068	hardened 1,9 x 6
425040	hardened 2,0 x 6
425038	hardened 2,1 x 6
425044	hardened 2,2 x 6
425032	hardened 2,3 x 6
425043	hardened 2,4 x 6
425042	hardened 2,5 x 6
425045	hardened 2,6 x 6
425046	hardened 2,7 x 6
425033	hardened 2,8 x 6
425039	hardened 2,9 x 6
425034	hardened 3,0 x 6
425041	hardened 3,1 x 6
425047	hardened 3,2 x 6
425048	hardened 3,3 x 6
425049	hardened 3,4 x 6
425035	hardened 3,5 x 6
425050	hardened 3,6 x 6
425051	hardened 3,7 x 6
425052	hardened 3,8 x 6
425053	hardened 3,9 x 6
425036	hardened 4,0 x 6
425054	hardened 4,1 x 6
425055	hardened 4,2 x 6
425056	hardened 4,3 x 6
425057	hardened 4,4 x 6
425058	hardened 4,5 x 6
425059	hardened 4,6 x 6
425060	hardened 4,7 x 6
425061	hardened 4,8 x 6
425062	hardened 4,9 x 6
425037	hardened 5,0 x 6

## TOOLING PIN (elementary)



Order number	Designation
425001	elementary 2,0 x 3
425002	elementary 2,1 x 3
425003	elementary 2,2 x 3
425004	elementary 2,3 x 3
425005	elementary 2,4 x 3
425006	elementary 2,5 x 3
425007	elementary 2,6 x 3
425008	elementary 2,7 x 3
425009	elementary 2,8 x 3
425010	elementary 2,9 x 3
425011	elementary 3,0 x 3
425012	elementary 3,1 x 3
425013	elementary 3,2 x 3
425014	elementary 3,3 x 3
425015	elementary 3,4 x 3
425016	elementary 3,5 x 3
425017	elementary 3,6 x 3
425018	elementary 3,7 x 3
425019	elementary 3,8 x 3
425020	elementary 3,9 x 3
425021	elementary 4,0 x 3
425022	elementary 4,1 x 3
425023	elementary 4,2 x 3
425024	elementary 4,3 x 3
425025	elementary 4,4 x 3
425026	elementary 4,5 x 3
425027	elementary 4,6 x 3
425028	elementary 4,7 x 3
425029	elementary 4,8 x 3
425030	elementary 4,9 x 3
425031	elementary 5,0 x 3

# FIXTURE ACCESSORIES

## MMI STIFFENING BAR (1 pc)



Order number	Designation
264012	MMI stiffening bar drawing no. E90-01304, Hornitex 10 mm

## MMI STIFFENING BARS (2 pcs)



Order number	Designation
109761	MMI stiffening bar, 2pcs drawing no. E90-01304, Hornitex 10 mm

## MMI STARTER PACKAGE



Order number	Designation
109762	20x push finger 50 mm 433108 20x spacer 439003 4x pilot bolt stainless steel 335012

## MMI STARTER PACKAGE HIGH (114,5 mm)



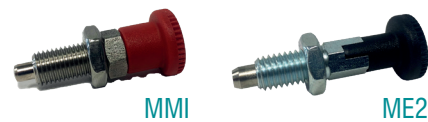
Order number	Designation
109763	20x push finger 110 mm 4x push finger 114,5 mm 20x spacer 439003 4x pilot bolt stainless steel 335012

## ALUMINIUM STIFFENING BAR (for MMI2-series and ME2-series)



Order number	Designation
264328	Aluminium stiffening bar drawing no. E90-03108

## TRANSPORT LOCK PIN



Order number	Designation
278704	transport lock pin MMI
220336	transport lock pin ME2

## ROUND SEALING



Order number	Designation
120340	Round sealling E06-00004 on moving plate (D=14 mm, d=8 mm, H=1,8 mm)
120461	Seal ring black 2mm under pin plate (E06-50080) D=17 mm

# FIXTURE ACCESSORIES

## SIDE PRESSURE PIECE (test ring clamp)



Order number	Designation
442080	Side pressure piece GN415-ZD-22-A1-KG-1

## INSERTION TOOL



Order number	Designation
928026	Insertion tool 40 mil for KS-040 adjustable
928004	Insertion tool 50 mil for KS-050 adjustable
927003	Insertion tool 75 mil for ARIT-1M adjustable
927002	Insertion tool 100 mil for ARIT-25M adjustable
480286	Insertion tool for spacer 3x2,5 mm

Imprint

Publisher:

ATX Hardware GmbH West

Am Wiesengrund 12

86932 Pürgen

Germany

Phone +49 8196 9304-0

Fax + 49 8196 9304-19

E-Mail: [projects@atx-hardware.de](mailto:projects@atx-hardware.de)

Web: [www.atx-hardware.de](http://www.atx-hardware.de)



## **ATX HARDWARE GMBH WEST**

**Location Pürgen** | Am Wiesengrund 12 | 86932 Pürgen

**Location Ehningen** | Waldstraße 15 | 71139 Ehningen

P +49 8196 9304-0

F +49 8196 9304-19

projekte@atx-hardware.de

[www.atx-hardware.de](http://www.atx-hardware.de)