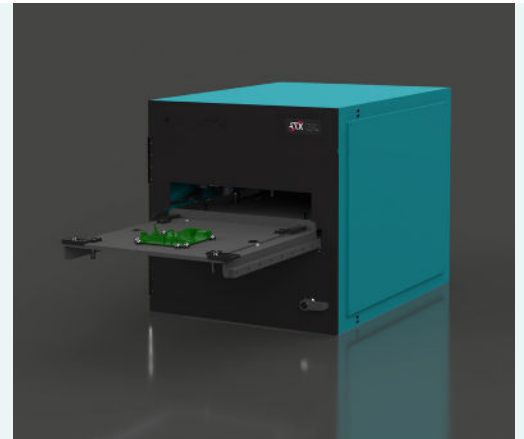


NEW: ESlide

Electrical drawer system

The innovative solution for automated manufacturing processes

The ESlide sets new standards in automation: it opens and closes autonomously, enables secure, unrestricted robot-assisted operation, and impresses with an unbeatable long lifespan. Compact and integrable into a 19-inch test rack or stackable in multiple layers, it optimizes space and ensures smooth workflows. Fully compatible with our proven MMIWK-A exchangeable cassette and also usable across manufacturers thanks to the ATXcompatibility line, it offers **maximum flexibility, efficiency, and a future-proof investment**. Expansion to additional products from the ATX portfolio is already in the planning stages.



Product highlights

- ✓ Fully compatible with our proven MMIWK-A exchangeable cassette and also usable across manufacturers thanks to the **ATXcompatibility line** (expansion to additional products are planned)
- ✓ Long-term tested for over 2 million strokes with even needle distribution (2000 N) and symmetrical fixture configuration
- ✓ Unmatched lifespan thanks to high-quality components – ideal for testing large volumes or flexible high-mix/low-volume requirements, thanks to the innovative exchangeable cassette technology with a changeover time of under one minute
- ✓ Efficient, unrestricted, and secure testing can be conducted by robots
- ✓ Stackable or seamlessly integrable into 19-inch test racks
- ✓ Robust, powerful 24 V stepper motor for the stroke
- ✓ Increased productivity thanks to fast automatic extension and closing of the drawer system
- ✓ Individual adjustment of the paths of multiple positions
- ✓ Included control electronics for communication via RS232

Expansion options

- ✓ Transfer option: drag chain
- ✓ Encoding of exchangeable cassettes via RFID

Maintenance recommendation

We recommend checking wear parts regularly to ensure long-term use under optimal conditions.

Order options

Give us a call or simply send us an email!

-  +49 8196 9304-0
-  projekte@atx-hardware.de
-  www.atx-hardware.de



General data

Product:	ESlide-MMIWK-A
Product family:	Automation
Product category:	Drawer System
Drive type:	Electric
Width:	452 mm
Height:	475 mm
Depth:	565 mm
Empty weight:	55 kg
Expandable:	Yes
Variants:	Stackable tabletop device or integrable into a 19-inch test rack
Interface:	Standard pylon interface panel (additional options available on request)
Test system:	Variabel

Technical data

Contact force:	2000 N
Needles:	1000 needles a 2 N
Component height:	50 mm (MMI-series)
Low voltage:	<60 volt
3-stage contacting:	Yes
Voltage:	24 V
CE marking:	Yes
RoHS compliance:	Yes
ESD compliant:	Yes